



User Interface

Start Recording

Pressing the REC button manually initiates video recording.



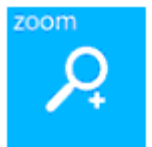
Switch Cameras

Switches recording from the front camera to the rear seat camera, or back to front camera from the rear seat camera.



Quick Zoom

The Quick Zoom button pans, tilts, and zooms the front camera based on presets contained in the Quick Zoom Settings (see back).



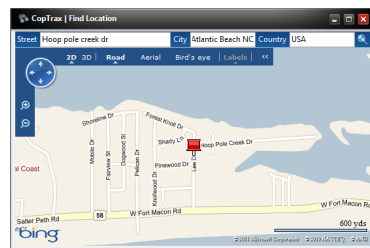
Take Photo

Takes a photo of the person, place, vehicle, license plate, etc. with the front camera which is then saved into the laptop's Documents folder.



Search for Location

Using Bing Maps, search of any location for viewing in route or aerial view.



Review

Plays back the last recorded video event as well as the pre-event.



Stop Recording

When the event is over, simply tap the STOP button.



Report Taken

Type:

Comments:

OK Cancel

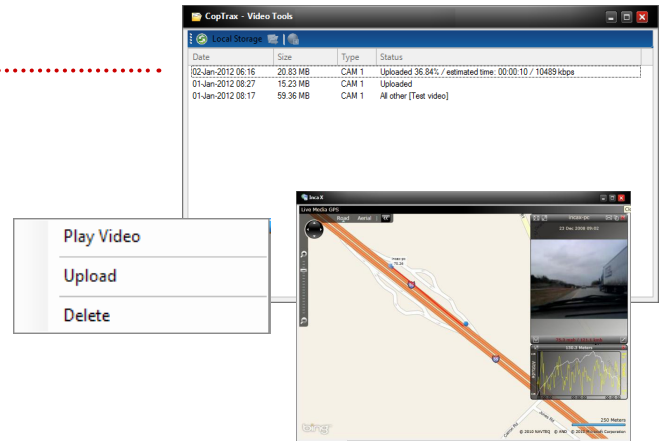
Once recording has been stopped, a Report Taken (Incident Report) window pops up.

Preset Incident Types as well as Officer's Comments may be entered for use in the crime mapping and statistical data capture.

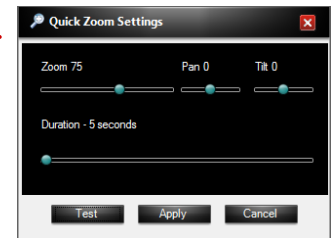
Settings Buttons

Video Upload and Playback Tools

Opens Video Tools screen. Right clicking on each line listing opens a popup window with playback options.



Quick Zoom Settings - Front camera Zoom, Pan, Tilt, and Duration settings



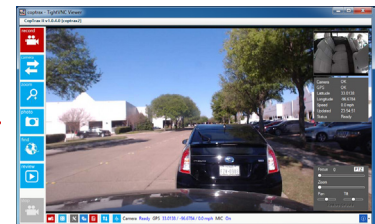
Triggers (Admin)

Settings (Admin)

Report Taken Setup (Incident Report - Admin)

Show/Hide GPS Panel and Camera Settings

Toggle button to show/hide the GPS Data panel and the PTZ (Pan, Tilt, Zoom) settings for the front camera.



Show/Hide Radar Display Window



Camera / GPS / Microphone Status

Help/About/Check for Update

